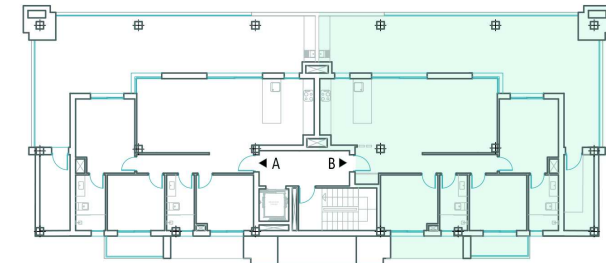


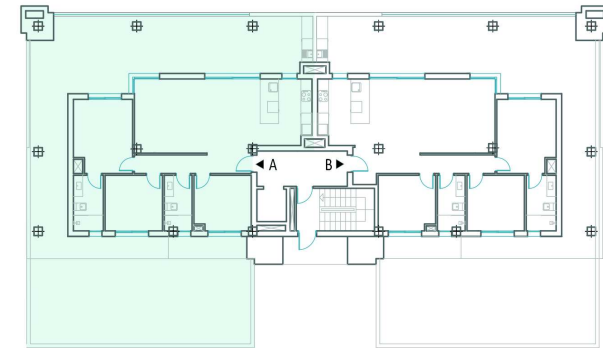
BLOCK A
3rd FLOOR TOURIST APARTMENT 3B



APARTMENT SURFACES
APARTMENT TYPE 3B

Net internal area (NIA)	m ² Area
01 - Living room / Dining room / Kitchen:	37.25 m ²
02 - Hallway:	7.70 m ²
03 - Bedroom 1:	12.28 m ²
04 - Bathroom 1:	4.84 m ²
05 - Bedroom 2:	9.30 m ²
06 - Bedroom 3:	9.07 m ²
07 - Bathroom 2:	4.50 m ²
08 - Storage:	6.67 m ²
09 - Terrace / Porch:	70.80 m ²
TOTAL NIA AP. 3B:	162.41 m²
Gross floor area (GFA)	
Apartment:	109.15 m ²
Terrace / Porch:	70.80 m ²
Common areas:	27.09 m ²
TOTAL GFA AP. 3B:	207.04 m²

BLOCK A
1ST FLOOR TOURIST APARTMENT 1A



APARTMENT SURFACES
APARTMENT TYPE 1A

Net internal area (NIA)	m ² Area
01 - Living room / Dining room / Kitchen:	36.95 m ²
02 - Hallway:	6.30 m ²
03 - Bedroom 1:	12.28 m ²
04 - Bathroom 1:	4.84 m ²
05 - Bedroom 2:	9.30 m ²
06 - Bedroom 3:	9.07 m ²
07 - Bathroom 2:	4.50 m ²
08 - Terrace / Porch:	86.84 m ²
TOTAL NIA AP. 1A:	170.08m²
Gross floor area (GFA)	
Apartment:	97.47 m ²
Terrace / Porch:	86.84 m ²
Private garden:	57.92 m ²
Common areas:	26.41 m ²
TOTAL GFA AP. 1A:	268.64 m²

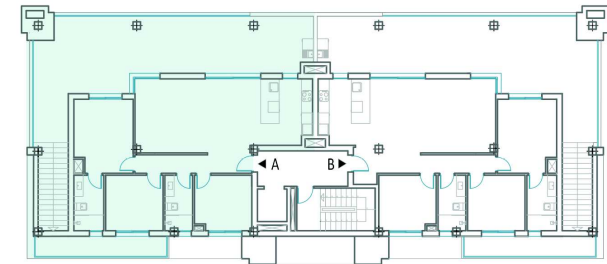
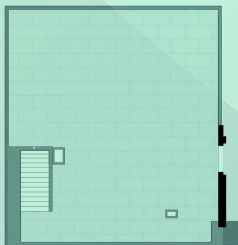


This plan is for informational purposes and may be modified for technical or legal reasons.

BLOCK A
4th FLOOR TOURIST APARTMENT 4A



PRIVATE SOLARIUM
138,20 m²



APARTMENT SURFACES
APARTMENT TYPE 4A

Net internal area (NIA)	m ² Area
01 - Living room / Dining room / Kitchen:	36.95 m ²
02 - Hallway:	6.30 m ²
03 - Bedroom 1:	12.28 m ²
04 - Bathroom 1:	4.84 m ²
05 - Bedroom 2:	9.30 m ²
06 - Bedroom 3:	9.07 m ²
07 - Bathroom 2:	4.50 m ²
08 - Terrace / Porch:	70.62 m ²
TOTAL NIA AP. 4A:	153.96m²
Gross floor area (GFA)	
Apartment:	99.30 m ²
Terrace / Porch:	70.62 m ²
Common areas:	25.23 m ²
Solarium:	138.20 m ²
TOTAL GFA AP. 4A:	333.35 m²